

PART OF N.E. 1/4 OF SECTION 29, T.7N., R.1W., S.L.B. & M.

TAXING UNIT: 10

IN NORTH OGDEN CITY  
SCALE 1" = 100'

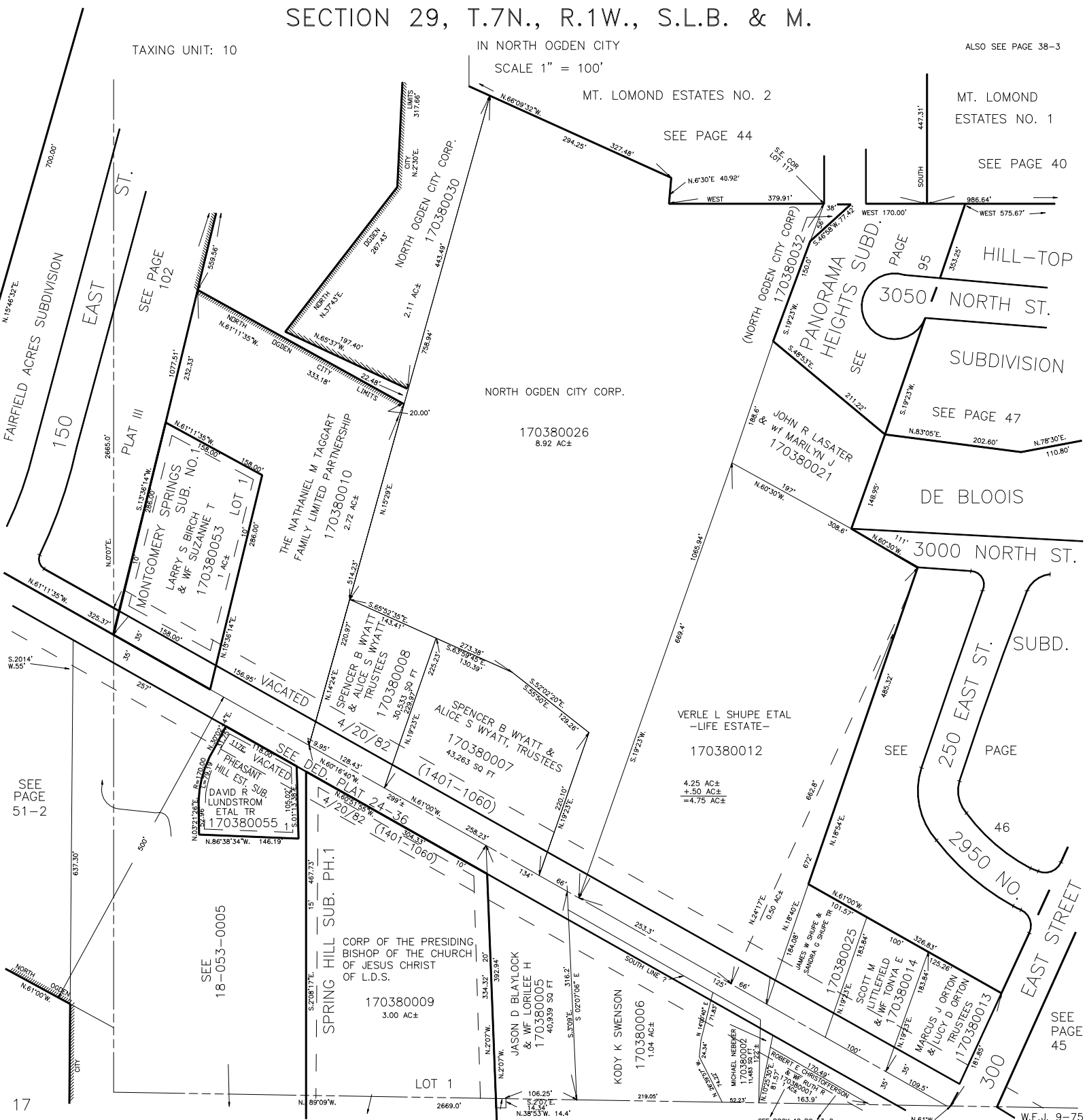
ALSO SEE PAGE 38-3

MT. LOMOND ESTATES NO. 2

MT. LOMOND ESTATES NO. 1

SEE PAGE 44

SEE PAGE 40



FAIRFIELD ACRES SUBDIVISION  
150  
EAST ST.

SEE PAGE 102

MONTGOMERY SPRINGS SUB. NO. 1  
LARRY S BIRCH & WIFE SUZANNE T  
170380053  
LOT 1  
1 AC±

THE NATHANIEL M TAGGART FAMILY LIMITED PARTNERSHIP  
170380010  
2.72 AC±

VACATED  
SPENCER B WYATT & ALICE S WYATT TRUSTEES  
170380008  
30,531 ± SQ FT  
4/20/82

SPENCER B WYATT & ALICE S WYATT, TRUSTEES  
170380007  
43,263 SQ FT  
(1401-1060)

SEE PAGE 51-2

VACATED  
DAVID R SUB LUNDSTROM ETAL TR  
170380055  
1

SEE 18-053-0005

SPRING HILL SUB. PH. 1  
CORP OF THE PRESIDING BISHOP OF THE CHURCH OF JESUS CHRIST OF L.D.S.  
170380009  
3.00 AC±

JASON D BLAYLOCK & WIFE LORILEE H  
170380005  
40,939 SQ FT

KODY K SWENSON  
170380006  
1.04 AC±

VERLE L SHUPE ETAL -LIFE ESTATE-  
170380012  
4.25 AC±  
+ .50 AC±  
= 4.75 AC±

SCOTT M LITTLEFIELD & WIFE TONYA E  
170380014

MARCUS J ORTON & WIFE LUCY D ORTON TRUSTEES  
170380013

JAMES W SHUPE & SANDRA G SHUPE RE  
170380025

MICHAEL NEEBER  
170380002  
10,480 SQ FT

ROBERT E & WIFE WYNNE PETERSON  
170380011  
163.9 AC±

SEE PAGE 45